

# THE SPIRIT OF THE NORTHEAST

As the city's oldest neighborhood, Northeast Minneapolis has always been a destination, attracting populations new to Minnesota and drawing together diverse communities with offerings for everyone.

The Northeast boasts a rich, walkable amenity base featuring abundant art galleries, local brewpubs and restaurants, and convenience retail, as well as access to the riverfront, bike trails, and parks - all creating an urban oasis on the east bank of the Mississippi River.

The Northeast community has been growing, with over 3,000 apartment units that have been recently delivered or are under construction.

Employees, residents, and visitors alike can enjoy efficient access to the CBD and freeways, and best-in-market parking options within the neighborhood.







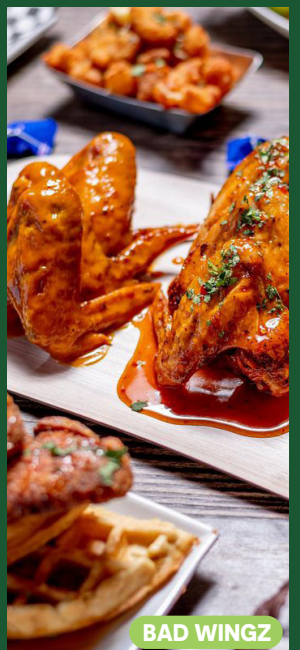
# FIND YOUR SCENE

WITHIN .4 MILES OF RIVERPLACE

49 RESTAURANTS

02 COFFEE SHOPS

08 RETAIL



# PRIME TRANSIT & PARKING OPTIONS

91 Walk Score.

Connected to six different large bus routes. The closest bus stop goes to Southtown, Edina, University of Minnesota, Uptown, Northtown, St. Paul and Downtown Minneapolis.

97 Bike Score. Connected to the 51 mile Grand Rounds bike loop. No bike, no problem! We have Riverplace branded bikes on site, as well as two Nice Ride bike stations.

**SE Parking Garage**  
30 SE 2nd Street @ The Main Hall

**450**  
PARKING SPOTS

**NE Parking Garage**  
10 NE 2nd Street @ The Studio

**222**  
PARKING SPOTS

**Current Rates** (subject to change):

\$149.00/mo + tax  
\$2/Hour with a \$25/Day maximum

\*Ask about our flex contract option to accommodate a hybrid workforce. Pay for less – get more!

Easy guest comp pass system in place.

Have questions? Call our parking operator!

Standard Parking - Joe Madrid  
651-233-7703 | jmadrid@spplus.com





# OPTIMAL COMMUTER ACCESS

Easily accessible by car from I-35 through the Northeast District and from I-94 & I-394 through Downtown.





## FIND YOUR FLOW

### JIM MONTEZ

612.359.1671

JIM.MONTEZ@TRANSWESTERN.COM



### REED CHRISTIANSON

612.359.1610

REED.CHRISTIANSON@TRANSWESTERN.COM



### MORGAN KANE

612.359.1630

MORGAN.KANE@TRANSWESTERN.COM

